



GAT MONTHLY MEMBERSHIP PROGRESS REPORT

Results as of: 3/31/2024

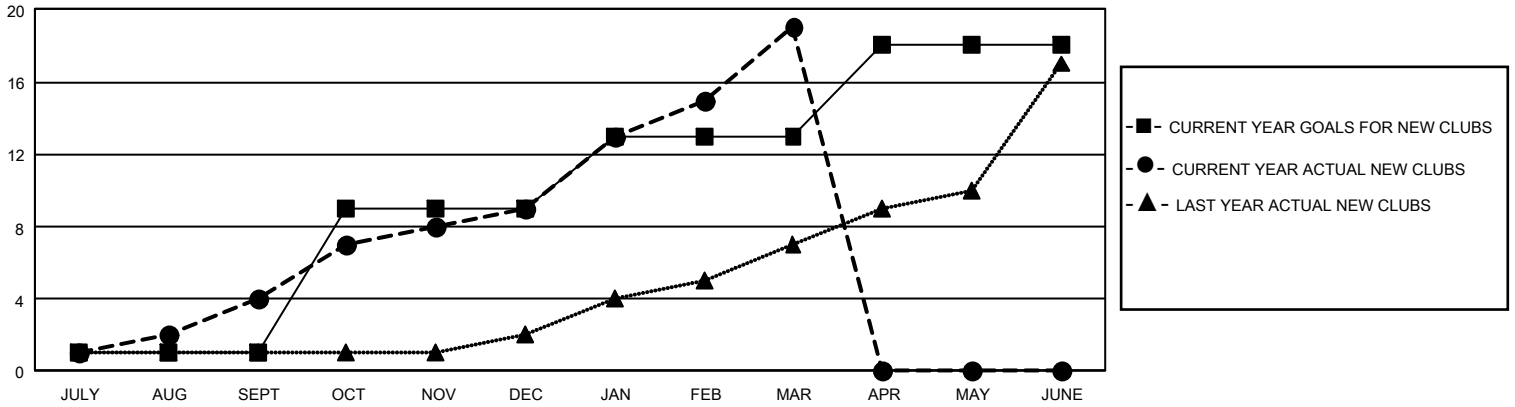
GMT Constitutional Area 4, Group I

REPORT DOES NOT INCLUDE CLUBS IN UNDISTRICTED AREAS.

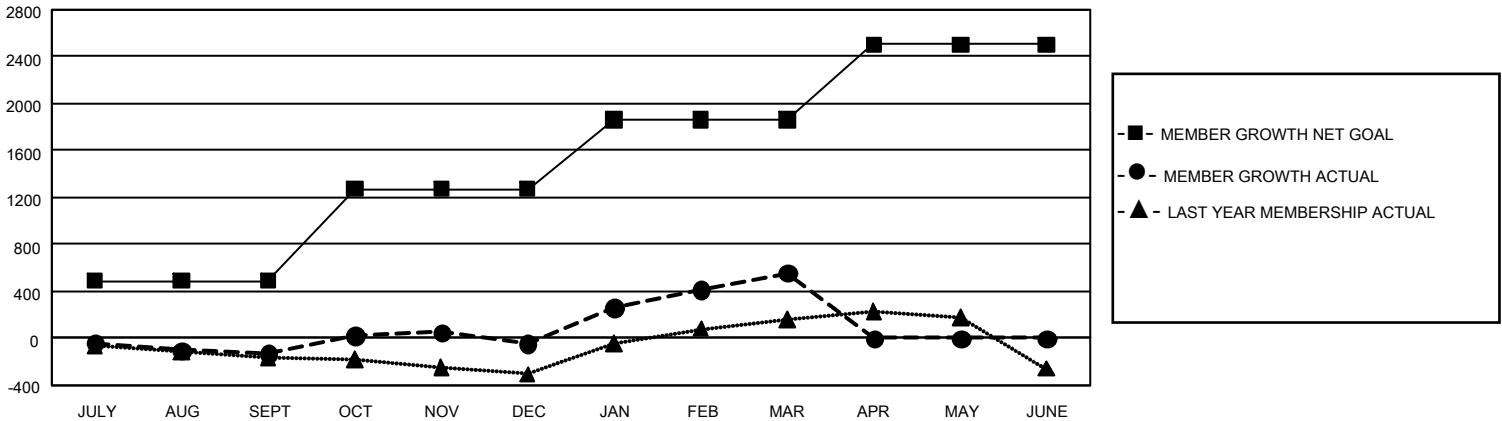
Clubs			
RESULTS FOR 2023-2024			
QUARTER	NEW CLUB GOAL	NEW CLUBS	DROPPED CLUBS
JULY/AUG/SEPT	3	4	9
OCT/NOV/DEC	24	5	4
JAN/FEB/MAR	12	10	0
APR/MAY/JUNE	15	0	0

Members			
RESULTS FOR 2023-2024			
QUARTER	MEMBER GROWTH NET GOAL	MEMBER GROWTH ACTUAL	DROPPED MEMBERS ACTUAL (including transfers)
JULY/AUG/SEPT	490	845	864
OCT/NOV/DEC	784	1,147	965
JAN/FEB/MAR	590	1,302	628
APR/MAY/JUNE	640	0	0

GOALS AND ACTUAL NEW CLUBS CUMULATIVE



GOALS AND ACTUAL MEMBERS CUMULATIVE



DROPPED CLUBS: 13	883 CLUBS OF 1,396 ADDED 1 OR MORE NEW MEMBERS	<u>GENDER DISTRIBUTION</u>	
		MALE 27,255 (69.17%)	FEMALE 12,143 (30.82%)
<u>DROPPED MEMBERS</u>		NON BINARY 0 (0.00%)	PREFER NOT TO ANSWER 4 (0.01%)
DECEASED 277	CLICK HERE FOR CUMULATIVE MEMBERSHIP DATA	TOTAL FAMILY UNIT MEMBERS 2,616	
CLUB CANCELLED 11		FAMILY MEMBERS PAYING HALF DUES 1,343	
OTHER 2,169			
TOTAL 2,457			